

**APPROVALS**

UTILITY COMPANIES  
*Ramon J. Salas* 11/12/87  
 Public Service Company of New Mexico (Electric) Date  
*Frank J. Bails* 11-12-87  
 Sangre de Cristo Water Company Date  
*E. K. Hanger* 11/12/87  
 Mountain States Telephone Company Date  
*Robert Wilson* 11-30-87  
 Gas Company of New Mexico Date

CITY OF SANTA FE  
*Ed Bennett* APPROVED BY 1-19-88  
 City Engineer Date  
*Keith Melt* APPROVED BY 2-1-88  
 City Planner Date

FINAL PLAT  
**PARK PLAZAS**  
 Phase 3

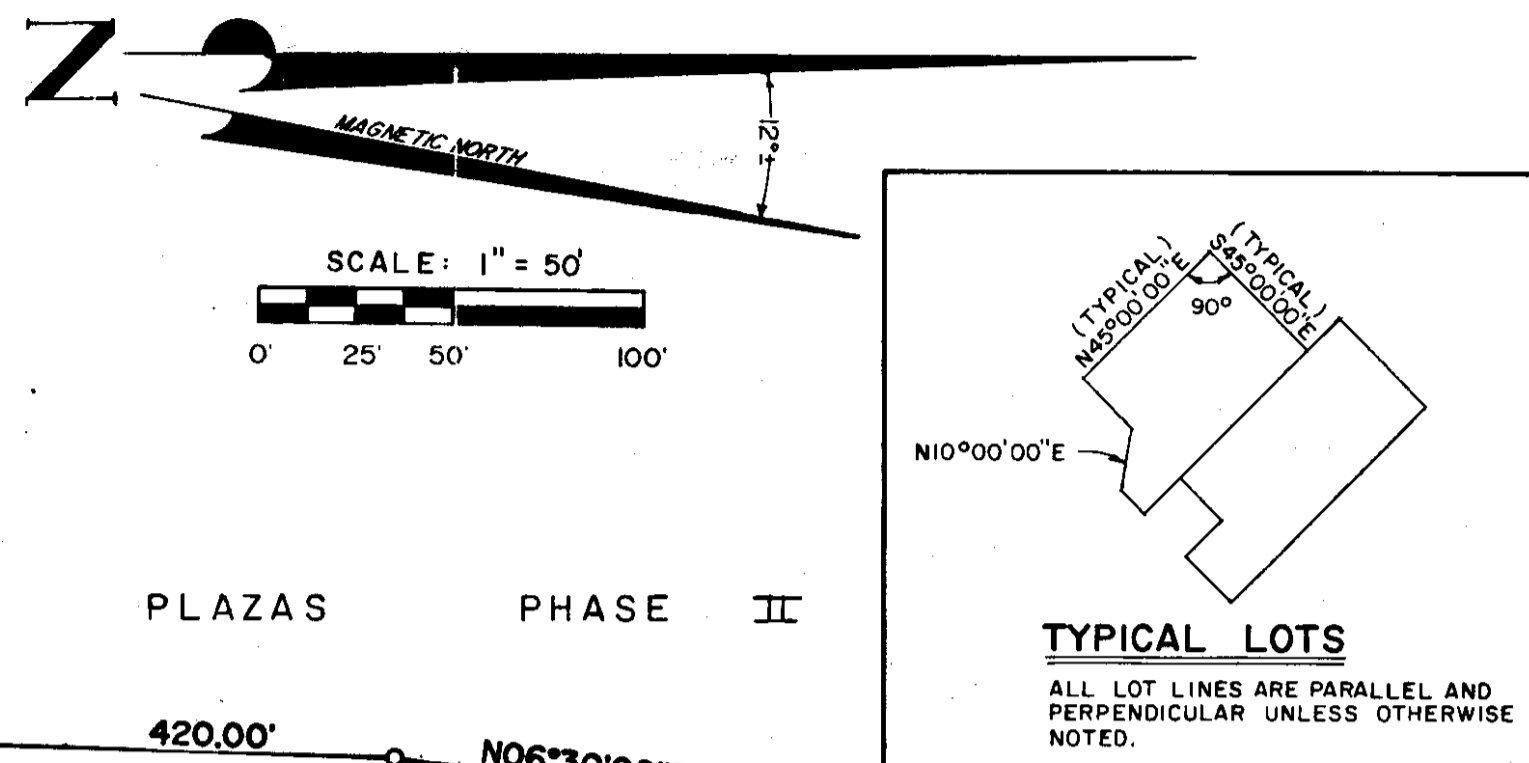
**DEDICATION**

KNOW ALL PERSONS BY THESE PRESENTS:  
 That the Chapman Land Company, a New Mexico corporation, have caused to be subdivided the lands shown on this plat, lying situate and being within the City of Santa Fe, New Mexico. All that appears on this plat is made with the free consent and in accordance with the desires of the undersigned owners and proprietors, and said owners and proprietors do hereby dedicate to the use of the public forever all streets & thoroughfares hereon shown, and grant easements for utilities as shown. All of the lands not included in public streets & lots are hereby dedicated to the Park Plazas Community Services Assoc. as common areas. The maintenance of all private streets and sewers will be the responsibility of the Park Plazas Community Services Association.

*Walter Chapman* CHAPMAN LAND COMPANY - PRESIDENT  
*Joan E. Chapman* VICE-PRESIDENT  
 ATTEST BY NOTARY PUBLIC: *William P. Hanger* 12-03-87 01-23-91  
 Notary Date Comm. Exp.

182016

**NOTE**  
 FINAL DEVELOPMENT PLAN APPROVED  
 ON NOV. 2, 1978 BY THE SANTA FE  
 PLANNING COMMISSION AS CASE #ZA1978-71.



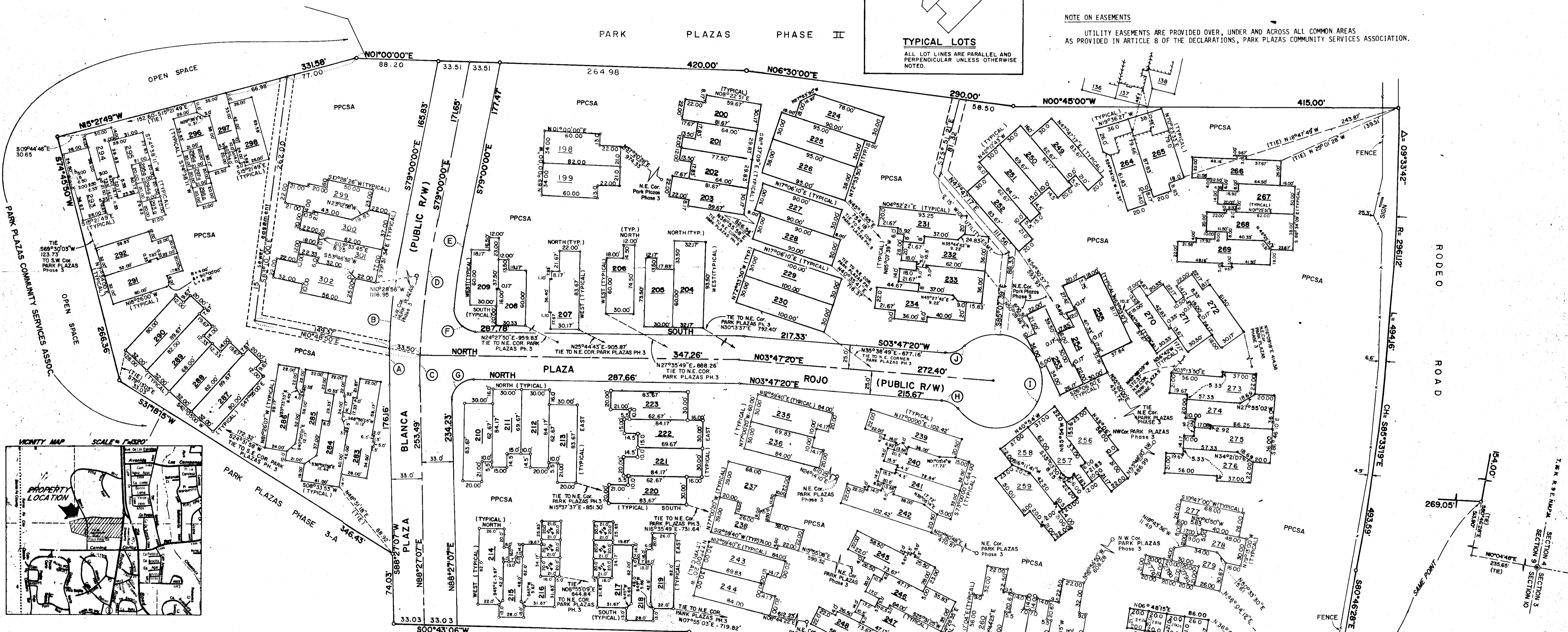
**AFFIDAVIT**

This Planned Unit Development lies within the planning and platting jurisdiction of the City of Santa Fe, New Mexico.

*Walter Chapman* *Joan E. Chapman*  
 Walton Chapman Joan E. Chapman  
 ATTEST BY NOTARY PUBLIC: *William P. Hanger* 11-13-87 01-23-91  
 Notary Date Comm. Exp.

**NOTE ON EASEMENTS**

UTILITY EASEMENTS ARE PROVIDED OVER, UNDER AND ACROSS ALL COMMON AREAS AS PROVIDED IN ARTICLE 8 OF THE DECLARATIONS, PARK PLAZAS COMMUNITY SERVICES ASSOCIATION.



**SURVEYORS CERTIFICATE**  
 I HEREBY CERTIFY THAT THIS PLAT AND THE SURVEY ON WHICH IT IS BASED WAS MADE BY ME OR UNDER MY PERSONAL DIRECTION AND CONTROL DURING THE MONTH OF NOVEMBER 1987, AND THAT THE DATA SHOWN HEREON IS TRUE AND CORRECT TO THE BEST OF MY KNOWLEDGE AND BELIEF. I FURTHER CERTIFY THAT THIS SURVEY MEETS OR EXCEEDS THE MINIMUM REQUIREMENTS OF THE STANDARDS FOR LAND SURVEYS IN NEW MEXICO AS ADOPTED BY THE NEW MEXICO STATE BOARD FOR PROFESSIONAL ENGINEERS AND LAND SURVEYORS.

*Richard E. Smith*  
 RICHARD E. SMITH, N.M.P.L.S. #5837

ATTEST BY NOTARY PUBLIC  
*William P. Hanger* 11-10-87 01-23-91  
 NOTARY DATE COMMISSION EXPIRES



**CURVE DATA**

(A)	R = 837.51	Δ = 02°36'46"	L = 38.19'
(B)	R = 837.51	Δ = 09°56'07"	L = 145.23'
(C)	R = 804.51	Δ = 02°12'32"	L = 31.01'
(D)	R = 804.51	Δ = 12°32'53"	L = 145.18'
(E)	R = 771.51	Δ = 06°26'44"	L = 86.79'
(F)	R = 25.00	Δ = 94°33'17"	L = 41.26'
(G)	R = 25.00	Δ = 91°32'53"	L = 39.95'
(H)	R = 25.00	Δ = 48°11'23"	L = 21.03'
(I)	R = 50.00	Δ = 276°22'46"	L = 241.18'
(J)	R = 25.00	Δ = 48°11'23"	L = 21.03'

DEVELOPMENT WITHIN PHASE III WILL MAINTAIN A MINIMUM OF 10' SETBACK FROM EXISTING STRUCTURES IN PHASE III.

**LEGEND:**  
 P.P.C.S.A. PARK PLAZAS COMMUNITY SERVICES ASSOC.  
 ○ INDICATES PROPERTY CORNER  
 ● INDICATES CALCULATED POINT  
 ——— INDICATES FENCE LINE

**SMITH WILLIAMSON & ASSOCIATES**  
 1210 Luba Street, Suite 3 Santa Fe, New Mexico 87501  
 305/953-5234

FINAL PLAT OF			
PARK PLAZAS Phase 3			
SCALE	PROJECT NO.	DATE	SHEET NO.
1" = 50'	3010	1/13/81	1 of 1