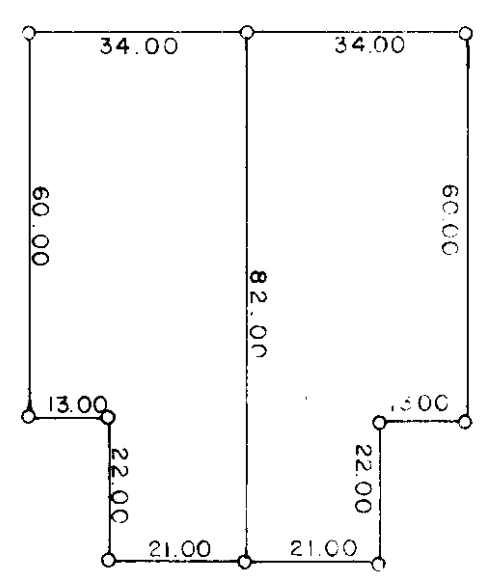


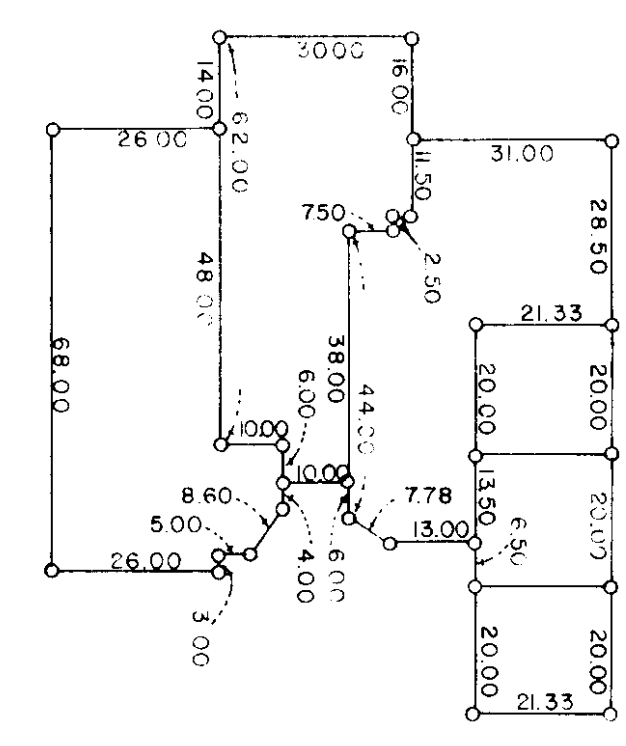
SUMMARY PLAT  
OF  
**PARK PLAZAS**  
FINAL DEVELOPMENT PLAN  
PHASE 2

A planned unit development within  
the City of Santa Fe, New Mexico.

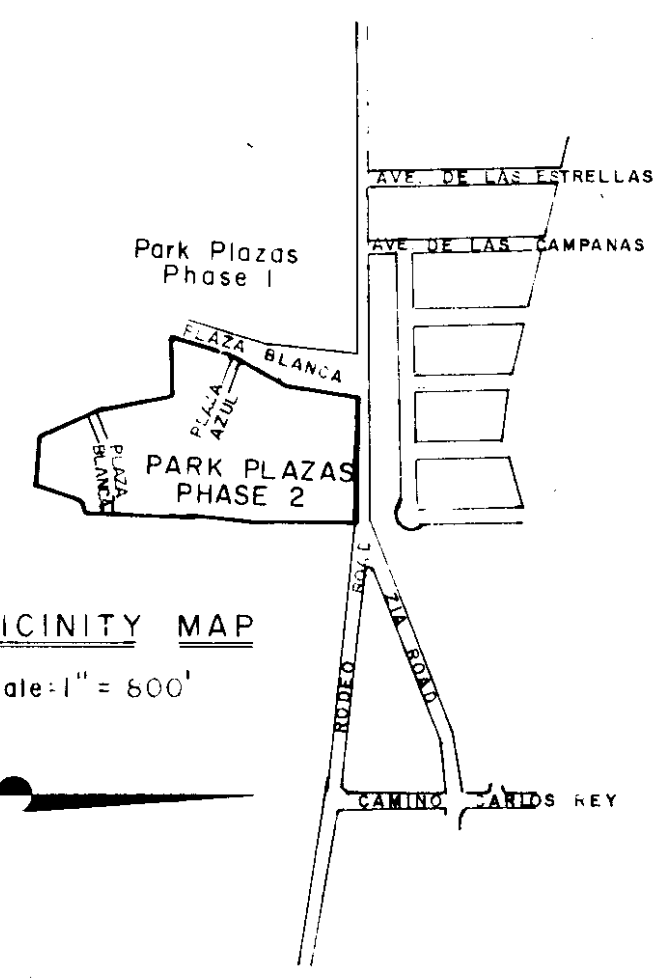
Showing the configuration of Lots 102 thru 195,  
all as filed in the office of the Santa Fe County Clerk.



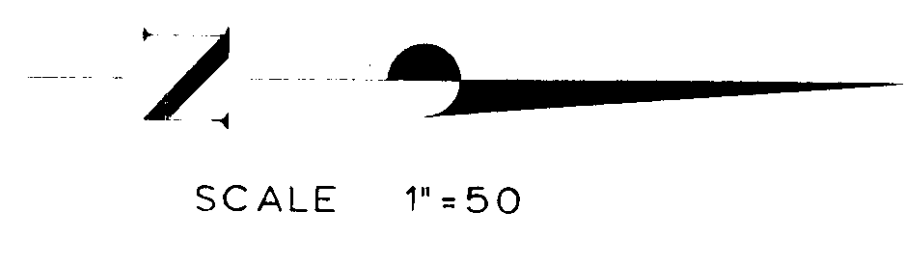
TYPICAL DUPLEX LOTS  
(Except Lots 149-150)



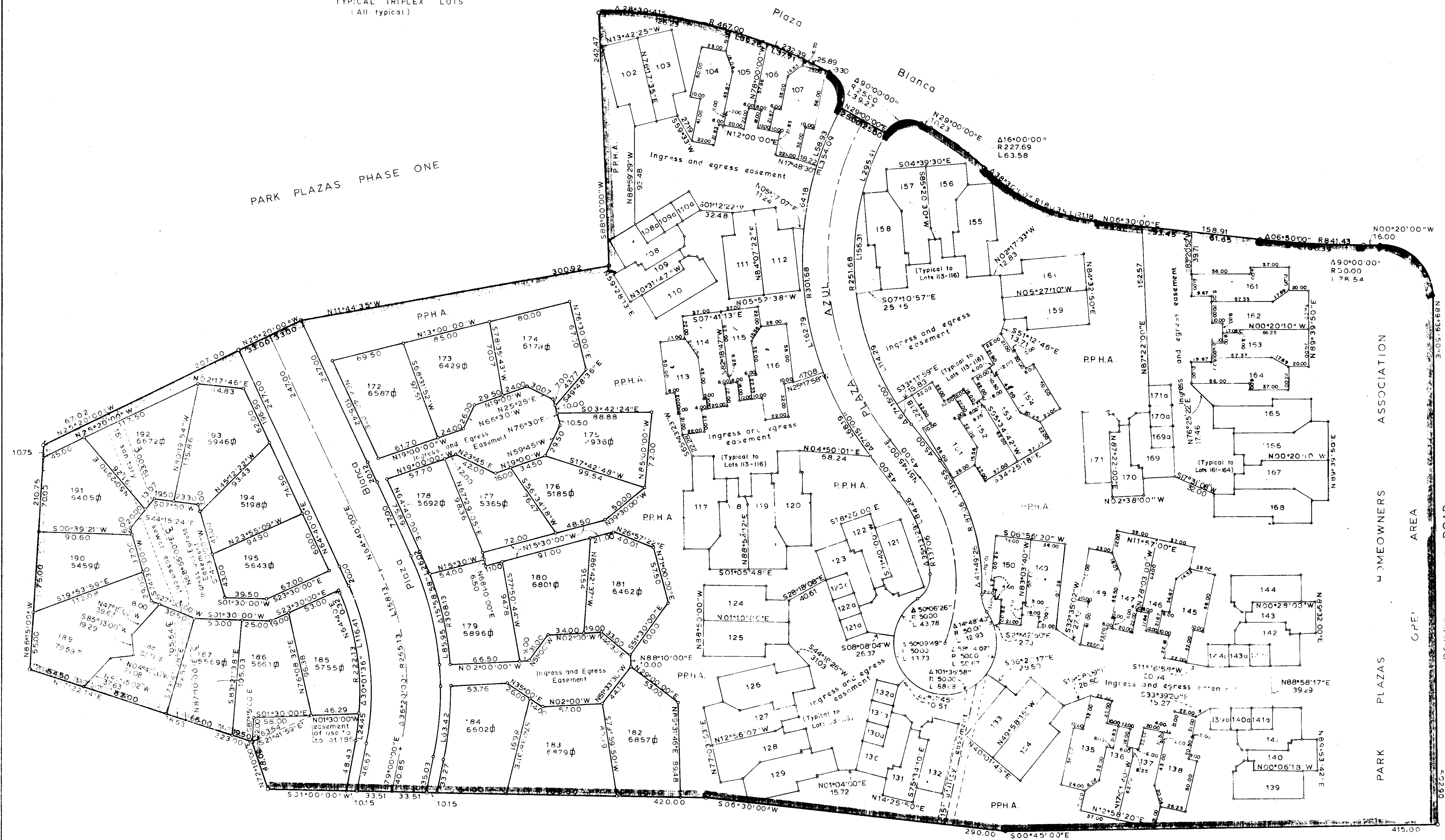
TYPICAL TRIPLEX LOTS  
(All typical)



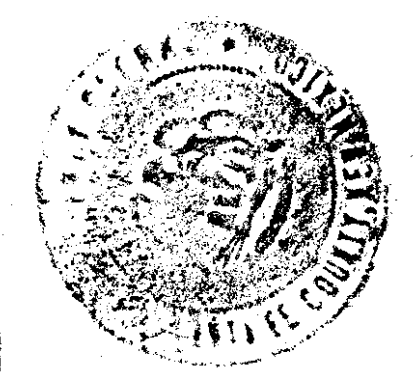
VICINITY MAP  
Scale: 1" = 600'



SCALE 1"=50'



COUNTY OF SANTA FE 155  
STATE OF NEW MEXICO 1457941  
I hereby certify that this instrument was filed  
for record on the 5th day of March 1988  
at 2:31 o'clock P.M.  
and was duly recorded in book 79  
page 80 of the records of Santa Fe County.  
Witness My Hand and Seal of Office  
CAROLINA Z. GONZALES  
County Clerk, Santa Fe County, N.M.  
*Michelle Salazar*  
Deputy



NOTE ON EASEMENT:  
Utility easements are provided over, under and across all common  
areas as provided in Article 8 of the Declarations, Park Plazas  
Community Services Association.

NOTE:  
P.P.H.A. designates Park Plazas Homeowners Association Open Area

SURVEYORS CERTIFICATE  
I HEREBY CERTIFY THAT THIS PLAT AND THE SURVEY ON WHICH  
IT IS BASED WAS MADE BY ME OR UNDER MY PERSONAL DIRECTION  
AND CONTROL DURING THE MONTH OF MARCH 1988 AND  
THAT THE INFORMATION SHOWN HEREON IS TRUE AND CORRECT  
TO THE BEST OF MY KNOWLEDGE AND BELIEF.

*Richard E. Smith*  
RICHARD E. SMITH  
NM PLS#5837